

The Cost of Inequality: Economic, Social, and Political Consequences

Dr. Tapen Gupta¹, Dr. Ganesh Bajirao Mangade²

¹Principal, Department of Management, Swami Devi Dyal Institute of Management Studies

²Assistant professor N K Varadkar Arts and R V Belose Commerce college Dapoli, Ratnagiri

Abstract:

Rising inequality has emerged as one of the most pressing and persistent challenges of the twenty-first century, with far-reaching implications for economic stability, social cohesion, and political governance across both developed and developing nations. Despite significant global economic progress, the distribution of income, wealth, and opportunities remains highly uneven, raising critical concerns about the sustainability and inclusiveness of growth models. This conceptual paper examines the multidimensional costs of inequality by integrating insights from key disciplines, including economic theory, social stratification, and political economy, to develop a comprehensive and interdisciplinary understanding of the phenomenon.

The study proposes an integrative framework that links structural drivers of inequality such as globalization, rapid technological change, skill-biased innovation, policy distortions, and institutional weaknesses to a range of adverse outcomes. These include economic inefficiencies manifested in reduced aggregate demand, underinvestment in human capital, and slower long-term growth; social fragmentation characterized by declining mobility, increased exclusion, and erosion of trust; and political instability reflected in governance challenges, institutional weakening, and rising polarization. By conceptualizing inequality as a systemic rather than merely distributive issue, the paper argues that its impacts extend beyond individual welfare to influence the overall functioning and resilience of societies. Furthermore, the paper highlights how unequal access to critical resources such as education, healthcare, financial capital, and political representation creates self-reinforcing cycles of disadvantage that perpetuate inequality across generations. These disparities not only undermine productivity and innovation but also weaken social trust and civic engagement, thereby threatening the legitimacy and effectiveness of democratic institutions. In this context, inequality is framed as a structural barrier to achieving sustainable and inclusive development.

By synthesizing a wide range of interdisciplinary literature, this study contributes to a more holistic and nuanced understanding of inequality's complex and interconnected consequences. It also provides a conceptual foundation for future empirical research and policy formulation aimed at promoting equitable growth, strengthening institutional capacity, and enhancing societal resilience in an increasingly uncertain global environment.

Keywords: Inequality, Economic Growth, Social Cohesion, Political Stability, Income Distribution, Inclusive Development.

1. INTRODUCTION

Inequality has become a defining and persistent feature of contemporary global economies, shaping the distribution of income, wealth, and opportunities across societies. While the past few decades have witnessed unprecedented economic growth and significant reductions in extreme poverty, particularly in emerging economies, the gains from this growth have been distributed unevenly. As a result, disparities within and between countries have widened, raising serious concerns about the sustainability and inclusiveness of current development trajectories. According to World Bank (2024) and United Nations Development Programme (2023), inequality remains a major barrier to achieving inclusive growth and long-term human development. Scholarly discourse increasingly challenges the notion that inequality is an inevitable by-product of market-driven growth. Influential economists such as Thomas Piketty (2014) and Joseph Stiglitz (2012) argue that rising inequality is largely shaped by policy choices, institutional arrangements, and structural dynamics within the global economy. Piketty (2014) demonstrates that when returns on capital exceed overall economic

growth rates, wealth becomes increasingly concentrated, leading to persistent inequality. Similarly, Stiglitz (2012) emphasizes that unequal societies often result from regulatory failures, weak redistribution mechanisms, and governance systems that disproportionately favour elites.

The processes of globalization, technological advancement, and financialization have further accelerated these trends. Globalization has expanded markets and facilitated capital mobility, yet it has also intensified competition and contributed to wage disparities, particularly for low-skilled workers. Technological change, especially automation and artificial intelligence, has created a skill-biased demand for labour, disproportionately benefiting highly skilled individuals while displacing routine jobs (Autor, 2022; International Labour Organization, 2023). At the same time, financialization has enabled wealth accumulation through capital markets, often disconnected from real economic productivity, thereby exacerbating wealth concentration (Epstein, 2019).

Empirical evidence indicates that in many countries, the top 1% holds a disproportionately large share of national wealth, while middle- and lower-income groups face stagnant wages, job insecurity, and limited access to essential services such as education and healthcare (OECD, 2023; World Inequality Report, 2022). These disparities are not merely economic but extend to unequal access to opportunities, reinforcing cycles of intergenerational inequality and limiting social mobility. As a result, individuals from disadvantaged backgrounds face structural barriers that constrain their life chances, perpetuating inequality across generations.

Beyond its economic dimensions, inequality has profound social consequences. High levels of inequality are associated with reduced social cohesion, increased crime rates, and declining trust among individuals and institutions (Wilkinson & Pickett, 2009; OECD, 2023). Societies characterized by large disparities often experience fragmentation, where social groups become increasingly segregated along economic lines. This erosion of social capital weakens collective action and undermines the sense of shared identity necessary for stable and cooperative societies.

The political implications of inequality are equally significant. Inequality can distort democratic processes by concentrating political power in the hands of economic elites, thereby influencing policy decisions in ways that reinforce existing disparities (Acemoglu & Robinson, 2012). Recent studies highlight that rising inequality is linked to increased political polarization, populist movements, and declining trust in democratic institutions (Rodrik, 2021; World Economic Forum, 2024). When large segments of the population perceive the system as unfair or exclusionary, it can lead to political instability, social unrest, and weakened governance structures.

Moreover, inequality poses a serious challenge to sustainable development. It undermines economic efficiency by limiting human capital development, reduces social resilience by increasing vulnerability, and weakens institutional effectiveness by eroding trust and legitimacy. In this context, inequality is not merely a distributive concern but a systemic issue that affects the overall functioning and sustainability of societies.

Against this backdrop, the present paper aims to examine the **cost of inequality** across three interconnected dimensions economic, social, and political. It seeks to develop an integrated conceptual framework that explains how structural drivers of inequality translate into multidimensional consequences, ultimately affecting societal well-being and long-term sustainability. By synthesizing interdisciplinary perspectives, the study contributes to a more comprehensive understanding of inequality and provides a foundation for future research and policy interventions aimed at fostering inclusive and equitable development.

2. LITERATURE REVIEW

2.1 Economic Perspectives on Inequality

Early economic theories often viewed inequality as a functional and even necessary component of economic development. The classical Kuznets Curve, proposed by Simon Kuznets (1955), suggested an inverted U-shaped relationship between income inequality and economic growth, where inequality initially rises during industrialization but eventually declines as economies mature. This perspective implied that inequality was a temporary and self-correcting phenomenon. However, contemporary empirical evidence increasingly challenges this assumption, showing that inequality can persist or even intensify in advanced economies.

Modern economic research highlights the adverse effects of excessive inequality on macroeconomic stability and long-term growth. Joseph Stiglitz (2012) argues that high inequality reduces aggregate demand because

lower- and middle-income groups have a higher marginal propensity to consume. When income is concentrated among the wealthy, overall consumption declines, leading to slower economic growth. Furthermore, inequality constrains investment in human capital, as disadvantaged populations face limited access to quality education, healthcare, and skill development opportunities.

Similarly, Thomas Piketty (2014) demonstrates that when the rate of return on capital (r) exceeds the rate of economic growth (g), wealth accumulates disproportionately among capital owners, leading to persistent and widening inequality. This structural dynamic reinforces wealth concentration across generations and undermines economic mobility.

Recent empirical studies further support the negative growth implications of inequality. Berg and Ostry (2017) find that countries with lower levels of inequality tend to experience longer periods of sustained economic growth. The International Monetary Fund (IMF, 2023) also reports that high inequality is associated with financial instability, increased likelihood of economic crises, and weaker recovery trajectories. Additionally, inequality can distort resource allocation by limiting entrepreneurial opportunities for lower-income individuals, thereby reducing innovation and productivity potential (OECD, 2023).

Thus, contemporary economic perspectives increasingly recognize inequality not as a growth-enhancing mechanism but as a structural constraint that undermines efficiency, stability, and long-term development.

2.2 Social Consequences of Inequality

Beyond its economic implications, inequality has profound and far-reaching social consequences. Research by Wilkinson and Pickett (2009) demonstrates that societies with higher levels of inequality tend to perform worse across a wide range of social indicators, including life expectancy, mental health, crime rates, and educational outcomes. Their work suggests that inequality affects not only the poorest segments of society but also overall societal well-being.

Inequality shapes access to essential services such as education, healthcare, housing, and employment, creating disparities in life chances. According to the United Nations Development Programme (2023), unequal access to opportunities reinforces intergenerational disadvantage, as children from low-income families are less likely to achieve upward mobility. This leads to persistent cycles of poverty and social exclusion.

Social stratification theories provide further insight into how inequality structures society. These theories argue that unequal distribution of resources creates rigid class hierarchies, limiting social mobility and reinforcing systemic disadvantage (Bourdieu, 1986). Cultural, social, and economic capital become concentrated within privileged groups, making it difficult for marginalized populations to access opportunities and improve their socio-economic status.

Moreover, inequality erodes social cohesion and trust. High levels of disparity often lead to increased social fragmentation, where individuals perceive society as unfair and unequal. This perception reduces interpersonal trust and weakens community bonds, making collective action more difficult (OECD, 2023). Inequality is also associated with higher crime rates and social unrest, as marginalized groups may resort to alternative means of survival or expression of dissatisfaction.

In this sense, inequality is not only a matter of material deprivation but also a driver of social instability and fragmentation, undermining the foundations of cohesive and resilient societies.

2.3 Political Implications of Inequality

From a political economy perspective, inequality has significant implications for governance, institutional quality, and democratic processes. Daron Acemoglu and James A. Robinson (2012) argue that societies characterized by high inequality are more likely to develop extractive institutions, which concentrate power and resources in the hands of a small elite. These institutions prioritize the interests of the powerful while limiting opportunities for the broader population, thereby perpetuating inequality.

Inequality can distort democratic systems by enabling wealthy individuals and corporations to exert disproportionate influence over political decision-making. Campaign financing, lobbying, and policy capture often result in policies that favor elite interests, reducing the responsiveness and accountability of governments (Stiglitz, 2012). This undermines the legitimacy of democratic institutions and weakens public trust.

Recent research also highlights the link between inequality and political instability. According to the World Economic Forum (2024), rising inequality is associated with increased political polarization, populist movements, and social unrest. When large segments of the population feel excluded from economic and political systems, they are more likely to support radical or anti-establishment movements, leading to governance challenges and policy uncertainty.

Furthermore, inequality contributes to declining trust in government and public institutions. Citizens in highly unequal societies often perceive governance systems as biased or ineffective, resulting in lower civic engagement and voter participation (Rodrik, 2021). This disengagement weakens democratic processes and reduces the capacity of governments to implement inclusive policies.

In extreme cases, persistent inequality can lead to social unrest, protests, and even conflict, particularly when combined with economic shocks or political crises. Thus, inequality not only affects economic and social outcomes but also poses a fundamental threat to political stability and institutional resilience.

3. CONCEPTUAL FRAMEWORK

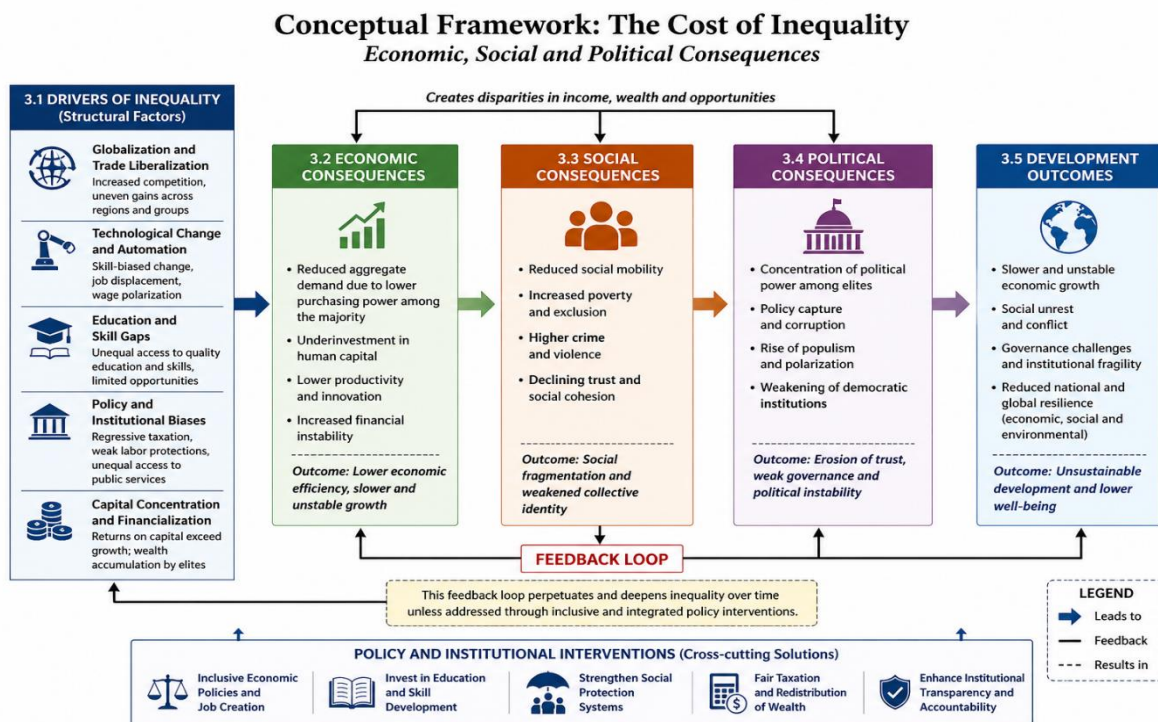


Figure 1: Conceptual Framework

3.1 Drivers of Inequality

The framework begins by identifying the structural drivers that generate and sustain inequality across societies. Globalization and trade liberalization, while expanding economic opportunities and market access, have also intensified competition and created uneven gains across regions and skill groups. High-skilled workers and capital owners often benefit disproportionately, while low-skilled labour faces wage stagnation and job insecurity. Similarly, rapid technological change and automation have introduced a skill-biased transformation in labour markets, favouring individuals with advanced education and digital competencies while displacing routine and manual jobs.

Education and skill gaps further reinforce these disparities, as unequal access to quality education limits the ability of individuals to compete in knowledge-driven economies. Policy and institutional biases such as regressive taxation systems, weak labour protections, and unequal access to public services often exacerbate inequality by favouring certain groups over others. Additionally, capital concentration and financialization have enabled wealth accumulation among a small segment of society, as returns on capital frequently outpace income from labour. Collectively, these drivers create structural imbalances in income, wealth, and opportunity, forming the foundation of persistent inequality.

3.2 Economic Consequences

Inequality imposes significant economic costs that extend beyond distributional concerns to affect overall economic performance. One of the primary consequences is the reduction in aggregate demand, as a larger share of income concentrated among the wealthy leads to lower overall consumption, given their relatively lower marginal propensity to spend. This demand constraint can slow economic growth and reduce business investment incentives.

Furthermore, inequality results in underinvestment in human capital, as individuals from disadvantaged backgrounds face barriers to accessing education, healthcare, and skill development opportunities. This limits workforce productivity and reduces the economy's long-term growth potential. High levels of inequality can also hinder innovation, as unequal access to resources restricts entrepreneurial opportunities and the ability to translate ideas into productive outcomes. Additionally, inequality contributes to financial instability by encouraging excessive borrowing among lower-income households and speculative investment behaviours among the wealthy. Rather than enhancing efficiency, excessive inequality distorts market mechanisms and weakens the foundations of sustainable economic development.

3.3 Social Consequences

The social consequences of inequality are profound and multifaceted, affecting both individual well-being and collective societal functioning. One of the most critical impacts is the reduction in social mobility, as unequal access to opportunities limits the ability of individuals to improve their socio-economic status. This leads to entrenched poverty and intergenerational disadvantage, where inequalities are transmitted across generations.

Inequality also contributes to increased social exclusion, as marginalized groups face barriers to participation in economic, social, and cultural life. This exclusion often manifests in disparities in access to education, healthcare, and employment opportunities. Moreover, high levels of inequality are associated with higher rates of crime and violence, as economic disparities can generate frustration, resentment, and social tension. Perhaps most importantly, inequality erodes trust within society. When individuals perceive the system as unfair, it weakens social cohesion and reduces the willingness to cooperate for collective goals. This fragmentation undermines the sense of shared identity and belonging, making it more difficult to address common challenges and sustain social stability.

3.4 Political Consequences

Inequality has far-reaching political implications that affect governance, institutional quality, and democratic legitimacy. One of the most significant consequences is the concentration of political power among economic elites, who can influence policy decisions through financial resources, lobbying, and institutional control. This often leads to policy capture, where public policies are designed to benefit a narrow group rather than the broader population.

Such dynamics increase the risk of corruption and reduce transparency, undermining the effectiveness of governance systems. Inequality also contributes to the rise of populism and political polarization, as marginalized groups become disillusioned with existing institutions and seek alternative political solutions. This polarization can weaken democratic processes by fostering division and reducing consensus-building.

Furthermore, persistent inequality undermines trust in democratic institutions, as citizens perceive governance systems as biased or unresponsive. This can lead to reduced political participation, lower voter turnout, and increased support for anti-establishment movements. In extreme cases, inequality can trigger social unrest and political instability, posing a direct threat to institutional resilience and governance effectiveness.

3.5 Development Outcomes

The cumulative impact of economic, social, and political consequences of inequality ultimately shapes broader development outcomes. High levels of inequality are associated with slower and more volatile economic growth, as structural imbalances hinder productivity and limit the efficient use of resources. Social unrest becomes more likely in unequal societies, as disparities generate dissatisfaction and conflict among different groups.

Governance challenges also intensify, as weakened institutions struggle to address complex socio-economic issues and maintain public trust. Moreover, inequality reduces both national and global resilience by increasing vulnerability to economic shocks, social disruptions, and environmental crises. Societies characterized by high inequality often lack the cohesion and institutional capacity required to respond effectively to such challenges.

In this context, inequality emerges not only as a distributive concern but as a systemic constraint on sustainable development. Addressing inequality is therefore essential for achieving inclusive growth, strengthening social stability, and ensuring long-term resilience at both national and global levels.

4. METHODOLOGY

This study adopts a **conceptual research design** based on an integrative literature review. The methodology involves synthesizing theoretical and empirical studies from economics, sociology, and political science.

Sources were drawn from peer-reviewed journals, books, and institutional reports using databases such as Google Scholar, Scopus, and Web of Science. The analysis focuses on identifying patterns, relationships, and theoretical linkages between inequality and its multidimensional impacts.

5. DISCUSSION AND IMPLICATIONS

5.1 Discussion

The analysis presented in this study demonstrates that inequality is not an isolated or purely economic issue but a deeply embedded systemic challenge that affects multiple dimensions of society simultaneously. From an economic perspective, high levels of inequality distort resource allocation, reduce aggregate demand, and limit investment in human capital, thereby constraining long-term growth potential. When a significant proportion of the population lacks access to opportunities and productive resources, the overall efficiency of the economy declines. This undermines innovation, productivity, and the capacity for sustainable development.

Socially, inequality weakens the fabric of society by eroding trust, reducing social cohesion, and increasing fragmentation. Disparities in access to education, healthcare, and employment opportunities create divisions among social groups, fostering exclusion and marginalization. These conditions often lead to increased crime rates, social unrest, and a diminished sense of collective identity. The absence of inclusive social structures makes it difficult for societies to function cohesively and respond effectively to shared challenges.

Politically, inequality distorts governance systems by concentrating power in the hands of a limited elite, thereby undermining democratic accountability and representation. When political influence is disproportionately aligned with economic power, policy outcomes tend to favour privileged groups, reinforcing existing inequalities. This dynamic contributes to declining trust in institutions, rising political polarization, and the emergence of populist movements.

Importantly, the framework developed in this study highlights the interconnected nature of these dimensions. Economic inequality generates social disparities, which in turn create conditions for political instability. Political instability then feeds back into economic systems by discouraging investment, weakening institutions, and limiting policy effectiveness. This cyclical relationship forms a self-reinforcing feedback loop that perpetuates inequality over time. Therefore, addressing inequality requires a holistic and integrated approach rather than isolated interventions.

5.2 Theoretical Implications

This study makes a significant theoretical contribution by integrating economic, social, and political perspectives into a unified conceptual framework. While existing literature often examines inequality within disciplinary boundaries, this research highlights the interdependence of these dimensions and demonstrates how inequality operates as a multidimensional phenomenon. By linking structural drivers to economic, social, and political consequences, the study advances a more comprehensive understanding of inequality's systemic nature.

Furthermore, the paper shifts the analytical focus from inequality as a purely distributive issue to inequality as a structural and systemic risk. Traditional approaches often emphasize income redistribution as the primary solution; however, this study underscores the importance of addressing underlying institutional, structural,

and policy-related factors that generate inequality in the first place. In doing so, it contributes to the broader discourse on sustainable development by positioning inequality as a critical barrier to long-term economic stability, social resilience, and effective governance.

The framework also extends existing theories in political economy and development studies by illustrating the feedback mechanisms through which inequality perpetuates itself. By conceptualizing inequality as both an outcome and a driver of systemic dysfunction, the study provides a foundation for future empirical research aimed at testing these relationships across different contexts.

5.3 Managerial and Policy Implications

The findings of this study carry important implications for both policymakers and organizational leaders. From a policy perspective, addressing inequality requires a comprehensive and coordinated approach that targets its structural drivers. Governments must prioritize inclusive economic policies that promote equitable growth and ensure that the benefits of development are widely shared. This includes implementing progressive taxation systems, strengthening labour market institutions, and supporting small and medium enterprises to enhance income distribution.

Investment in education and skill development is particularly critical, as it enables individuals to participate effectively in modern economies shaped by technological change. Expanding access to quality education, vocational training, and lifelong learning opportunities can reduce skill gaps and improve social mobility. Additionally, strengthening social protection systems—such as healthcare, unemployment benefits, and social security—can mitigate the adverse effects of inequality and provide a safety net for vulnerable populations. Ensuring institutional transparency and accountability is equally important for reducing inequality. Effective governance systems that minimize corruption and promote fair policy implementation can enhance public trust and ensure that resources are allocated efficiently. Policymakers must also address regional and demographic disparities by designing targeted interventions that support marginalized communities.

At the organizational level, firms play a crucial role in shaping income distribution and workplace equity. Organizations should adopt fair wage policies, reduce pay disparities, and promote inclusive hiring practices to address inequality within the labor market. Encouraging diversity and inclusion not only enhances social equity but also improves organizational performance by fostering innovation and diverse perspectives.

Moreover, investing in employee development through training and skill enhancement programs can empower workers and improve productivity. Organizations that prioritize equitable practices and human capital development contribute not only to their own sustainability but also to broader societal well-being.

In sum, addressing inequality requires a multi-level approach that combines effective public policy with responsible organizational practices. By aligning economic, social, and institutional strategies, it is possible to reduce inequality and promote a more inclusive, stable, and resilient society.

6. CONCLUSION

This paper demonstrates that inequality carries profound and multidimensional economic, social, and political costs that extend far beyond simple disparities in income and wealth distribution. It highlights that inequality is not merely a by-product of economic systems but a structural challenge that undermines the very foundations of sustainable development. Economically, persistent inequality constrains growth by limiting aggregate demand, reducing investment in human capital, and distorting resource allocation. Socially, it fragments societies by weakening social cohesion, eroding trust, and reinforcing cycles of exclusion and intergenerational disadvantage. Politically, inequality destabilizes governance systems by concentrating power among elites, distorting policy outcomes, and weakening democratic institutions. These interconnected consequences illustrate that inequality operates as a systemic risk, affecting not only individual well-being but also the resilience and functionality of entire societies.

The study further emphasizes that addressing inequality is not only a moral or ethical obligation but also a strategic necessity for achieving long-term economic stability and societal sustainability. Tackling inequality requires integrated and multidimensional policy approaches that go beyond redistribution to address its structural drivers, including unequal access to education, labour market disparities, institutional biases, and capital concentration. Policies that promote inclusive growth such as equitable access to quality education,

progressive taxation, robust social protection systems, and transparent governance are essential for mitigating inequality and fostering equal opportunities.

Moreover, reducing inequality has the potential to generate significant positive outcomes across multiple domains. It can enhance economic efficiency by expanding the productive capacity of the workforce, strengthen social cohesion by fostering trust and inclusion, and support stable democratic systems by ensuring fair representation and accountability. In this sense, reducing inequality is not only beneficial for marginalized populations but also critical for the overall health and resilience of economies and societies. Therefore, a comprehensive and sustained commitment to inclusive development is essential for building a more equitable, stable, and prosperous future.

7. FUTURE RESEARCH DIRECTIONS

Future research offers significant opportunities to deepen and refine the understanding of inequality by building on the conceptual framework proposed in this study. First, empirical validation of the framework is essential to test the relationships between structural drivers, multidimensional consequences, and development outcomes. Quantitative approaches such as structural equation modelling (SEM), panel data analysis, or multilevel modelling can be employed to examine the causal linkages and strength of associations across different contexts. Second, cross-country comparative studies can provide valuable insights into how institutional, cultural, and economic differences shape inequality and its impacts. Comparative analyses between developed and developing economies, as well as across regions, can reveal context-specific dynamics and policy effectiveness.

Third, longitudinal research is needed to capture the evolution of inequality over time and to understand its long-term effects on economic growth, social mobility, and political stability. Such studies can help identify whether inequality is persistent, cyclical, or responsive to policy interventions. Fourth, the growing role of the digital economy presents an important avenue for exploration. Future studies should examine how digitalization, platform economies, artificial intelligence, and automation influence income distribution, job polarization, and access to opportunities, particularly in emerging markets.

Fifth, the relationship between inequality and environmental sustainability warrants further investigation. Researchers can explore how unequal resource distribution affects environmental degradation, climate vulnerability, and the capacity of societies to adopt sustainable practices. Sixth, micro-level studies focusing on households and individuals can provide a more nuanced understanding of how inequality influences behaviour, well-being, access to services, and life outcomes. Such analyses can complement macro-level findings and offer deeper insights into lived experiences of inequality.

Seventh, intersectional approaches are critical for capturing the complexity of inequality. Future research should examine how overlapping dimensions such as gender, caste, ethnicity, and regional disparities interact to shape unequal outcomes. This is particularly relevant in diverse societies where multiple forms of disadvantage coexist. Finally, there is a need for rigorous evaluation of policy interventions aimed at reducing inequality. Studies assessing the effectiveness of taxation systems, social protection programs, labour market reforms, and educational policies can provide evidence-based recommendations for policymakers.

Overall, advancing research in these areas will contribute to a more comprehensive and evidence-driven understanding of inequality, enabling the development of targeted strategies to promote inclusive growth, social equity, and sustainable development.

REFERENCES:

1. Acemoglu, D., & Robinson, J. A. (2012). *Why nations fail: The origins of power, prosperity, and poverty*. Crown.
2. Acemoglu, D., Johnson, S., & Robinson, J. A. (2005). Institutions as a fundamental cause of long-run growth. *Handbook of Economic Growth*, 1, 385–472. [https://doi.org/10.1016/S1574-0684\(05\)01006-3](https://doi.org/10.1016/S1574-0684(05)01006-3)
3. Atkinson, A. B. (2015). *Inequality: What can be done?* Harvard University Press. <https://doi.org/10.4159/9780674287013>
4. Autor, D. H. (2022). The labour market impacts of technological change. *Journal of Economic Perspectives*, 36(2), 3–30. <https://doi.org/10.1257/jep.36.2.3>

5. Berg, A., & Ostry, J. D. (2017). Inequality and unsustainable growth. *IMF Economic Review*, 65(3), 456–482. <https://doi.org/10.1057/s41308-017-0030-8>
6. Bourdieu, P. (1986). The forms of capital. *Handbook of Theory and Research for the Sociology of Education*, 241–258.
7. Deaton, A. (2013). *The great escape: Health, wealth, and the origins of inequality*. Princeton University Press. <https://doi.org/10.1515/9781400847969>
8. Epstein, G. A. (2019). Financialization and inequality. *Journal of Economic Issues*, 53(2), 342–349. <https://doi.org/10.1080/00213624.2019.1594519>
9. Gethin, A. (2023). Inequality dynamics in the 21st century. *Socio-Economic Review*. <https://doi.org/10.1093/ser/mwad012>
10. Goldin, C., & Katz, L. F. (2008). *The race between education and technology*. Harvard University Press. <https://doi.org/10.4159/9780674035300>
11. International Labour Organization. (2023). *Global employment trends report*. <https://doi.org/10.54394/ILOTREND2023>
12. Kuznets, S. (1955). Economic growth and income inequality. *American Economic Review*, 45(1), 1–28.
13. Milanovic, B. (2016). *Global inequality: A new approach for the age of globalization*. Harvard University Press. <https://doi.org/10.4159/9780674969797>
14. OECD. (2023). *Income inequality update*. <https://doi.org/10.1787/inequality-2023-en>
15. Page, B. I., Bartels, L. M., & Seawright, J. (2013). Democracy and the policy preferences of wealthy Americans. *Perspectives on Politics*, 11(1), 51–73. <https://doi.org/10.1017/S153759271200360X>
16. Piketty, T. (2014). *Capital in the twenty-first century*. Harvard University Press. <https://doi.org/10.4159/9780674369542>
17. Piketty, T., & Saez, E. (2014). Inequality in the long run. *Science*, 344(6186), 838–843. <https://doi.org/10.1126/science.1251936>
18. Rodrik, D. (2021). Why does globalization fuel populism? *Annual Review of Economics*, 13, 133–156. <https://doi.org/10.1146/annurev-economics-090220-032733>
19. Saez, E., & Zucman, G. (2016). Wealth inequality in the United States since 1913. *Quarterly Journal of Economics*, 131(2), 519–578. <https://doi.org/10.1093/qje/qjw004>
20. Stiglitz, J. E. (2012). *The price of inequality*. W.W. Norton.
21. Stiglitz, J. E. (2015). New theoretical perspectives on inequality. *Econometrica*, 83(3), 1203–1226. <https://doi.org/10.3982/ECTA12097>
22. Thorbecke, E., & Charumilind, C. (2002). Economic inequality and its socioeconomic impact. *World Development*, 30(9), 1477–1495. [https://doi.org/10.1016/S0305-750X\(02\)00052-9](https://doi.org/10.1016/S0305-750X(02)00052-9)
23. Voitchovsky, S. (2005). Does inequality affect growth? *Journal of Economic Growth*, 10(3), 273–296. <https://doi.org/10.1007/s10887-005-3535-3>
24. Wilkinson, R. G., & Pickett, K. (2009). *The spirit level: Why more equal societies almost always do better*. Allen Lane.
25. World Bank. (2024). *World development report*. <https://doi.org/10.1596/978-1-4648-2045-5>
26. World Economic Forum. (2024). *Global risks report*. <https://doi.org/10.54394/WEF2024>
27. United Nations Development Programme. (2023). *Human development report*. https://doi.org/10.18356/undp_hdr2023
28. Hacker, J. S., & Pierson, P. (2010). *Winner-take-all politics*. Simon & Schuster.
29. Harvey, D. (2005). *A brief history of neoliberalism*. Oxford University Press.
30. Lindert, P. H. (2000). Three centuries of inequality. *Handbook of Income Distribution*, 1, 167–216. [https://doi.org/10.1016/S1574-0056\(00\)80004-9](https://doi.org/10.1016/S1574-0056(00)80004-9)
31. Alfani, G. (2024). Inequality in historical perspective. *Economic History Review*. <https://doi.org/10.1111/ehr.13245>
32. Gini, C. (1912). Variability and mutability. *Economic Journal*.